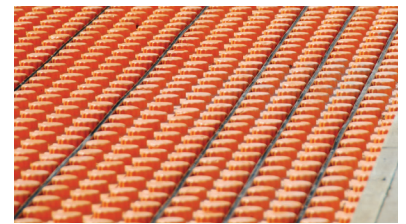


STEP 1

Creatherm Radiant Floor Panels are for 1/2", 5/8" or 3/4" I.D. PEX tubing. Make sure that your design layout uses 3" on-center multiples for your tube layout.



STEP 2

Determine how many panels are needed. Divide the total square footage of the installation area by 8 sq. ft. to calculate the number of T45, S45, U45 or S20 panels you will need. Note: Product only sold in full cartons.



STEP 3

Make sure your sub-base is smooth and at proper grade. The more accurate the leveling, the easier the installation. If you have chosen to install an optional vapor barrier, put it down next. (Check your local codes to see if it is a requirement **)



STEP 4

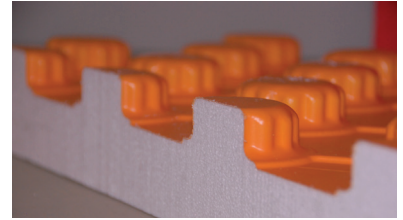
Remove the interlock from 2 sides of the starting panel to avoid an air gap.



STEP 5

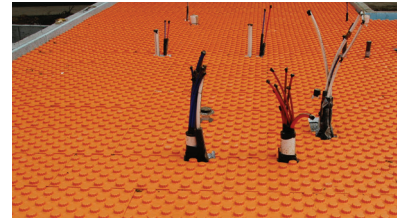
Start in any corner and lay down a row of panels from left to right. Take care that interlocks are snug and the panels are aligned.





STEP 6

After placing the last full panel of your first row, cut (shorten) the next panel to complete the row. Use the leftover segments to start the next rows. Be certain that the 3" spacing pattern is maintained. (S20 contractor series = 6" spacing).



STEP 7

Maintain a staggered (running bond) layout rather than rows and columns. This will keep the installation bound together, more durable, and reduce waste.



STEP 8

It may be desirable to weight or glue panels if windy conditions are expected before completion. Use a foam adhesive such as PL300 or Liquid Nails if gluing to Blue Board.



STEP 9

Install the PEX tubing by "walking" it in according to your design layout. If your layout needs to be changed, simply pull the PEX up and put it back where you want.



STEP 10

PEX tubing can be a challenge to unwind and bend in cold weather regardless of how it is being installed. Try to keep the PEX warm before and during installation to minimize the possibility of kinks and backlash. If your PEX wants to "pop" in a bend, it may be necessary to use Creatherm tubing accessories to fasten the PEX to the foam panel.

** Be sure that your installation complies with all local building codes.*