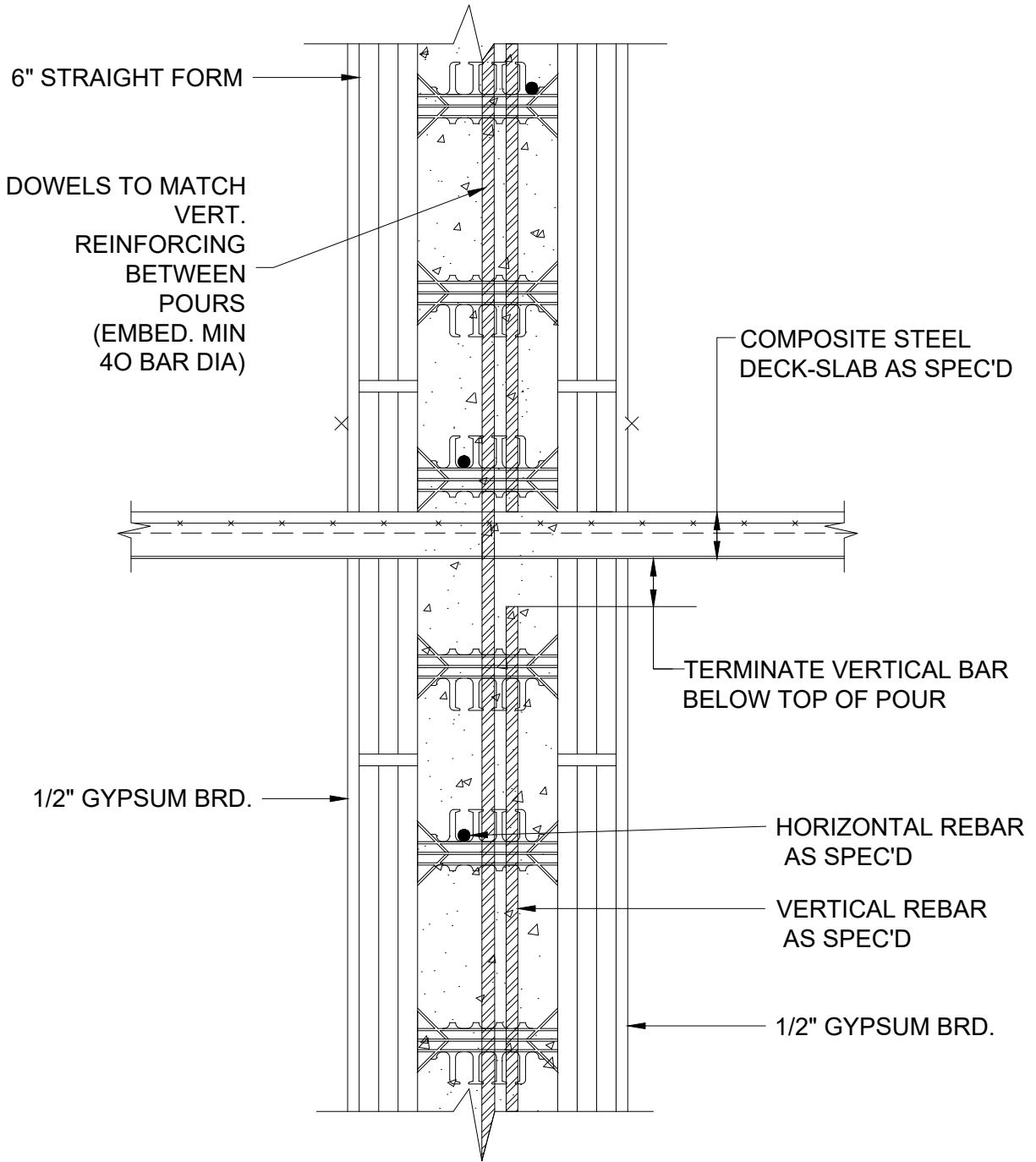


ALL VERTICAL STEEL SHALL BE PLACED IN CENTER OF CORE. BARS ARE SHOWN SEPARATE IN DIAGRAM FOR CLARITY.



1 COMPOSITE STEEL DECK SLAB
6 INCH

| | |
|----------------------|-----------------|
| DATE / REVISION / BY | 7-3-23 / 1 / AQ |
| SCALE | NTS |
| FILE NAME | 4.007 - BB600 |